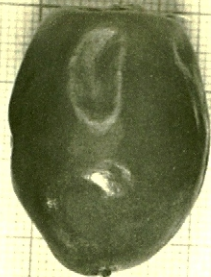


Khalal  
(yellow)



Rutab



Tamr



Pit

KHASTAWI

24.viii.32

(From Kharballiyah)

30-15



Khalal



Rutab



Tamr



Khalal

'UWAYDI

SUWAYDAN

10.viii.32

14.viii.32

30-15



Tamr  
 UMM  
 AD-  
 DUHN

Rutab

Tamr  
 'UWAYDI

Pit

24. viii. 32

From Kharraballah

34-12



Kharab  
 (yellow +  
 slight red)

Rutab

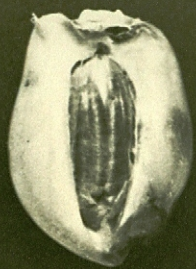
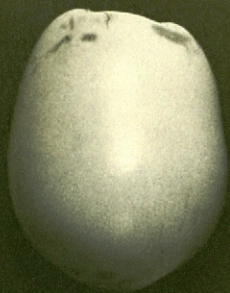
Pit

Rutab

Pit

HADAL

USTA'AMRAN  
 BAHAR



Khalal  
(Yellow)

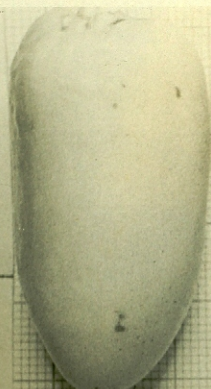
Rutab  
(Dark green)

MAKTUM

12. VIII. 52

Dikhkan, Basrah

38-30



Khalal

Rutab

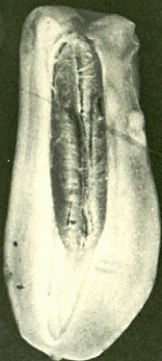
ISHAQ

HALLAWI

4. IX. 52

(Kut on Saqqid)

40-24



"Top"

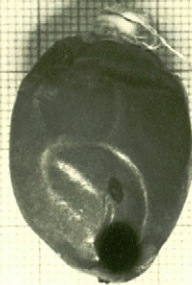
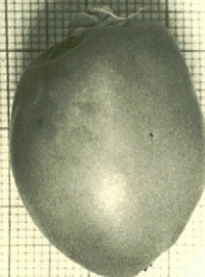
"Side"

Khalal  
(Yellow)  
DHULF

AL-QHAZAL

Rutab

24. VIII. 52



Khalal  
(yellow)

Rutab

Pit

HATIMI

24. VIII. 52

From Khalal...

20



Khalal (Pink)      Rutab      Tamar      Khalal (Yellow)

HALLAWI ABU BURAY?      USTA'AMRAN BAHRI (= BAHARIYAH)

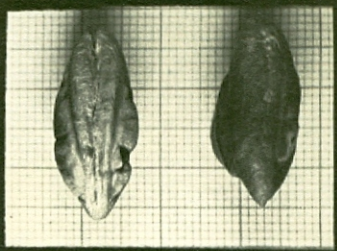
12. VIII. 32.      Dates from Dikhkan, Basrah.      38-29



Khalal (Yellow)      Rutab      Tamar

DUWAYRIQ      NUBATI (from Nubayti)

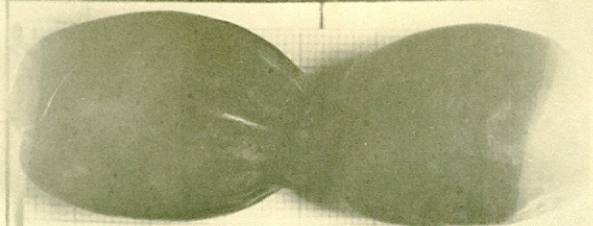
12. VIII. 32.      Dates from Dikhkan, Basrah.      38-28



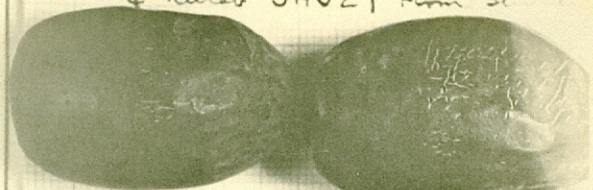
Khalal (Yellow)      PLS

SUWAYDAN

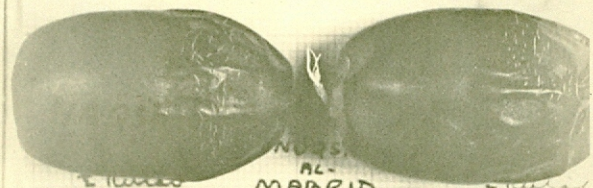
14. VIII. 32      (from Basrah)



± Rutab JAUZI from 52



± Rutab KHUNAYZ Rutab



± Rutab AL-MABRID Rutab



JUMAY'1  
± Rutab

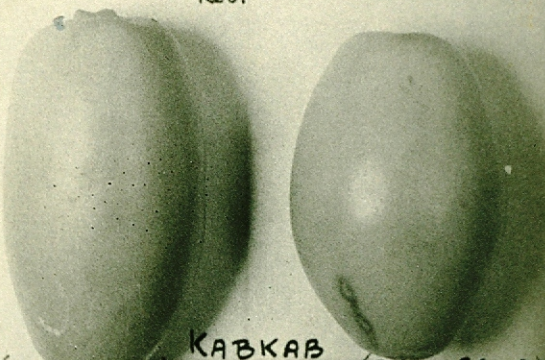
19.viii.32

39-3

all Red Khelal  
noe Nagah al-ma  
has not transu  
marshlango.



HAMRAWI  
(Khelal) Red. همرأوي



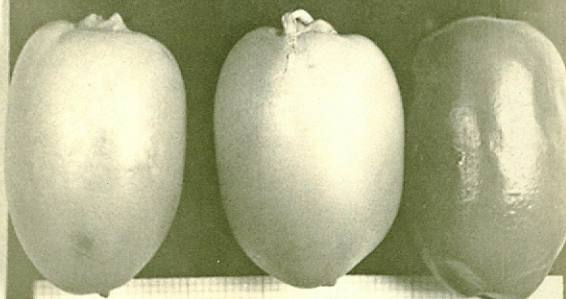
(From market) KABKAB (Khelal) (From shoot) yellow كيكاب

Khelal from Parnai'ali,  
15.vii.32

خلال



HATRI (Rutab)



DAQAL MANSUR (Khelal) HATRI (Rutab)

19.viii.32 (all yellow Khelal) 39-5

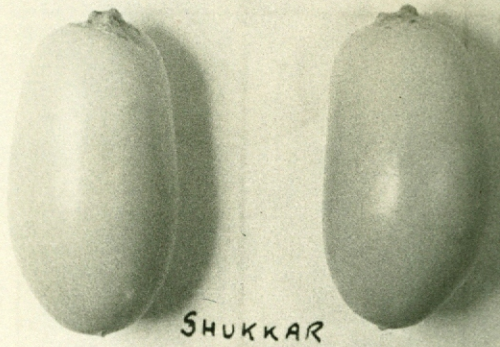


UMM AL-BAKHUR Baghdad SUKKARI Basrah

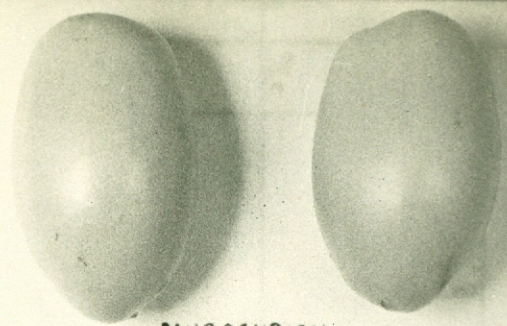
19.viii.32 (yellow Khelal) 39-7



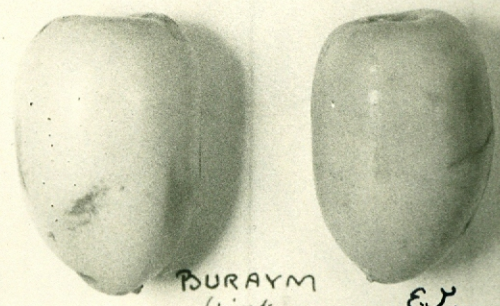
ASHAQ  
(kimri)  
اسحاق کمری



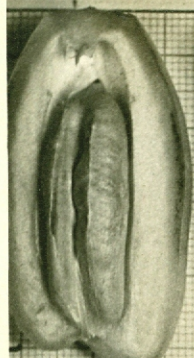
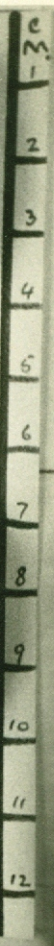
SHUKKAR  
(khatal) (yellow)  
Qasmat'ali, 15.VII.32.  
شکر خلال



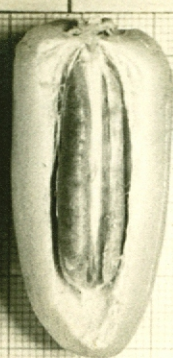
MUGASHBISH  
(yellow)  
میشبیش



BURAYM  
(pink + chrome)  
Khalal from Qasmat'ali,  
15.VII.32.  
خلال



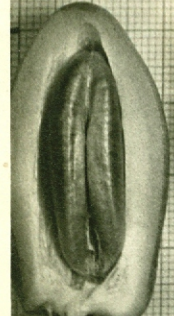
KABKAB  
(khatal)  
(yellow)  
کباب



HALLAWI  
(khatal)  
(yellow)  
خلالوت ابو بقیع



ABU BUDAYY  
(Tamr)



DAYRI  
(khatal)  
(red)  
دیری



NABATI  
(Tamr)  
نباتی  
Kut an Sayyid, 8.VIII.32.  
38-1



ASHQAR  
( $\frac{1}{2}$  khatal  
 $\frac{1}{2}$  Rutab)  
(red)  
اشقر



DAYRI  
دیری کمری



HALLAWI  
(khatal)  
خلالوت خلال

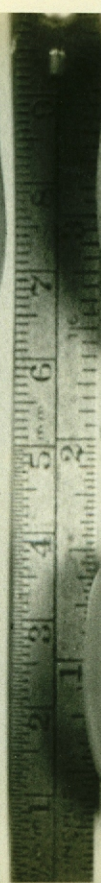


SAYIR



KHADRAWI  
خضراوی کمری

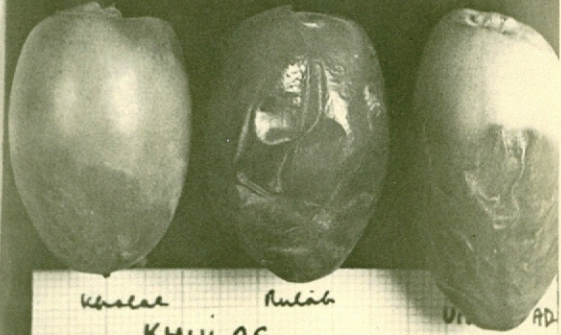
Three kimri and one khatal  
12.VII.32.  
36-36



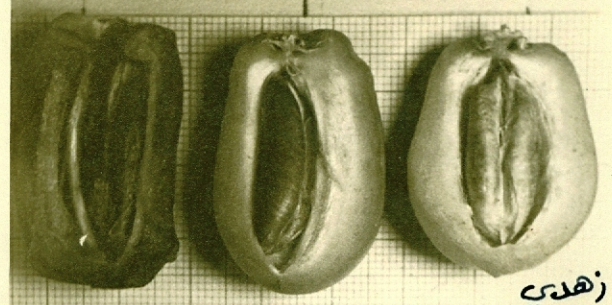




HASAIY  $\frac{1}{2}$  Rutab RIMAH  $\frac{1}{2}$  Rutab



Khatal Rutab KHULAS DUHN  $\frac{1}{2}$  Rutab. 19.viii.32 (Yellow Khatal) 39-6



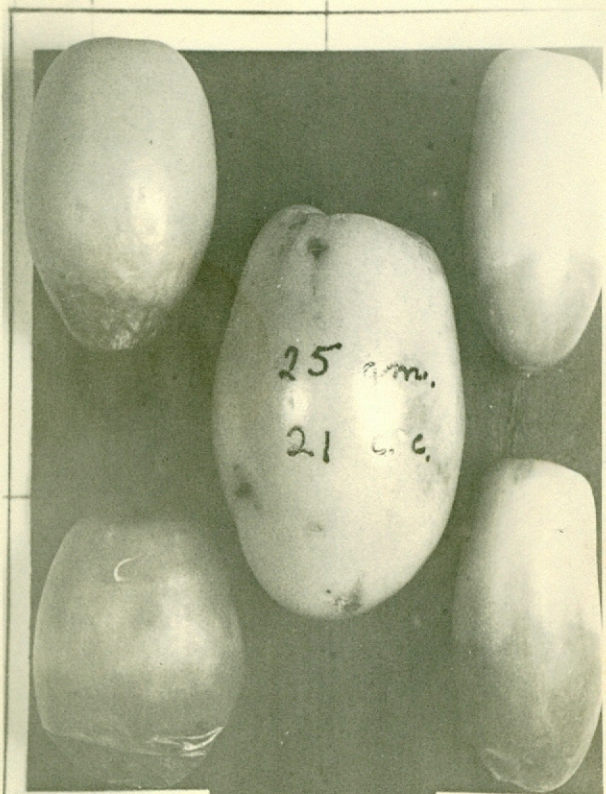
KHADHRAWI (Rutab) (green) خضراوي (yellow) ZAHDI (Khatal) (yellow) زهدي



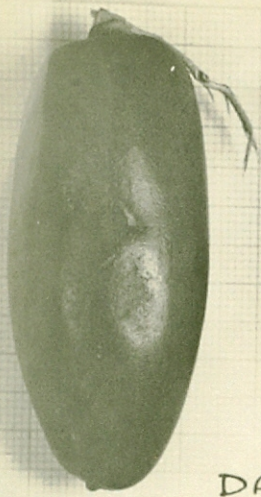
Kutab 2- Sayyid 8.viii.32 38-3 HALLAWI APSU KHUSHAYM ملاوي ابو خشيم



Cheshmeh فرسي خضري نرسي دقل موسي 19.viii.32



BALJANI Rutab tip +  $\frac{1}{2}$  Rutab. 19.viii.32 25 mm. 21 g. ASABI' AL- 'ARUS  $\frac{1}{2}$  Rutab +  $\frac{1}{2}$  Rutab 39-4 DAQAL



DAQAL  
khalal (Red)



HALWA

<sup>1/2</sup> Kutab  
all red.

19.viii.32

<sup>1/2</sup> Kutab  
34



BINT AS-SAB'I  
(vulg. Bint as-Sab'a)



HASAI (Rutab)  
(vulg. Hasawi)

No yellow fit  
18.viii.32. Kutab-Sayid, 38-36.

C.M.  
1  
2  
3  
4  
5  
6  
7  
8  
9  
10  
11



LULUI  
(kimri)  
لولوي كيري

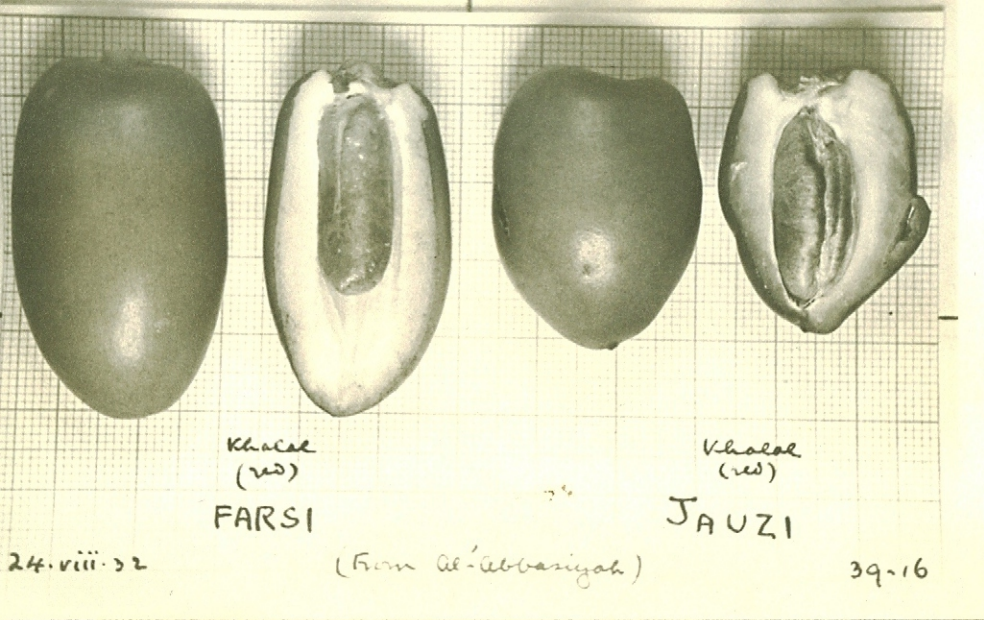


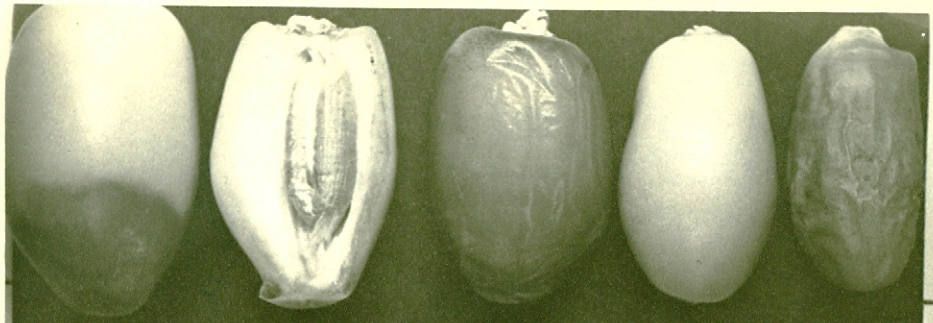
HALLAWI  
(khalal)  
(yellow)

Zamar'ali, 15.vii.32.

حلاوي خلال

C.M.  
2  
3  
4  
5  
6  
7  
8  
9  
10  
11  
12





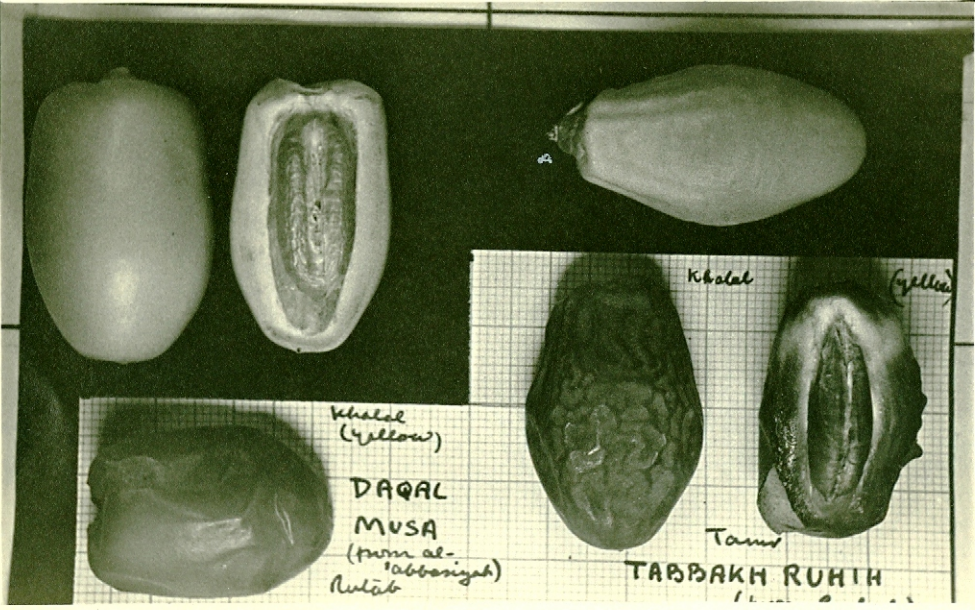
Rutab Tip      Khalal (yellow)      Full Rutab      Khalal (yellow)      Tamr

DAQAL MUSA  
(*Var. flattened apex*)

UMM AL-BUKHUR  
(a dry date)

12.VIII.52.      Dates from Sidikhan, Pasrah.

38-27



Khalal (yellow)  
DAQAL MUSA  
(from al-  
"abbanyah")  
Rutab

Khalal (yellow)

Tamr  
TABBAKH RUTH